

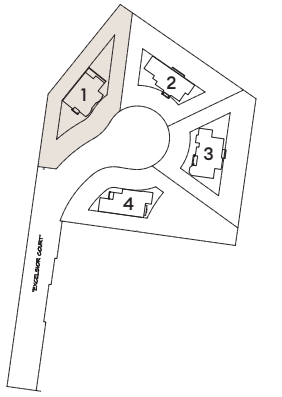


EXCELSIOR  
ESTATES

ROSLYN







## MODERN ARTS & CRAFTS

5 BEDROOMS | 5.5 BATHS | APPROX. 5,500 SF

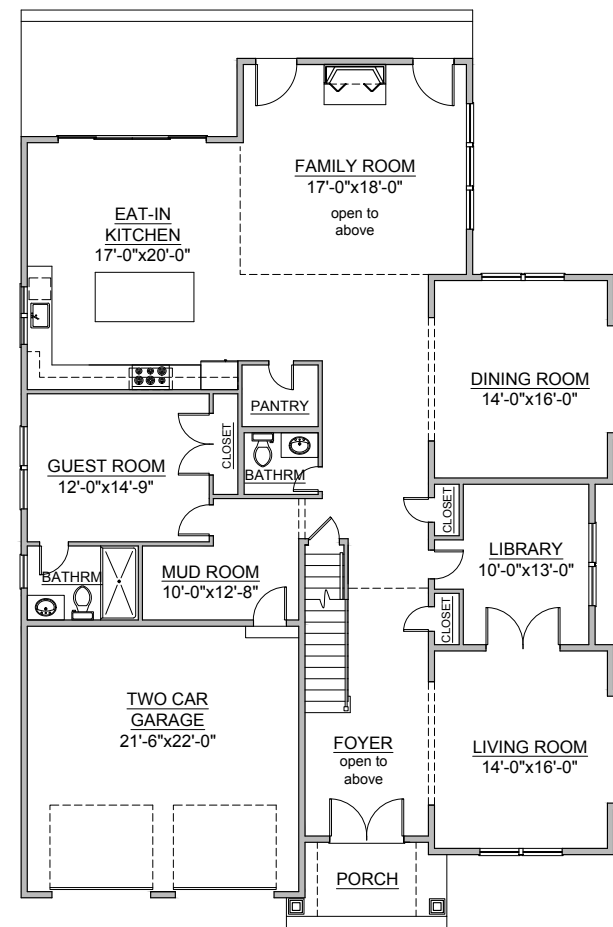
Imagine coming home from a stressful day at work to this sophisticated and stately stucco and stone approximately 5,500 square-foot home with coined corners, arched casements, and dramatic front porch welcoming you back to your enchanting oasis from the world. Standing serenely on a half-acre of level lawns, colorful plantings, and a verdant backdrop of trees, with ample space for possible pool and tennis, this sparkling new home has been meticulously designed and built to please and pamper you and your guests. No matter the season, you will love entertaining with easy flow from living room, through library, and into the lovely formal dining room, all featuring oak herringbone floors, high ceilings with massive crown moldings, fielded-panel wainscoting, and many large casement windows with transom lights. Equally great flow runs between the bright and airy two-story great room, with an inviting gas fireplace flanked by French doors to the rear patio, and the spacious and sunny gourmet kitchen with its granite-topped extra tall cabinetry, mosaic backsplash, stainless steel farm sink, high-end appliances, walk-in pantry, and huge center island with seating. A roomy breakfast area opens to the patio. Also on this level is a handy mudroom, with built-ins, accessing the attached two-car garage, a comfortable guest suite with full bath, and a powder room.

Masterfully designed to afford your master suite complete privacy, the second floor has three generous bedrooms, each with its own bath, off a front hallway with access to a back balcony overlooking the great room where double doors open to the palatial master suite. This comprises a sunny spacious bedroom, gigantic custom-fitted dressing room/closet, and lavish marble bath with free-standing tub, oversized glass-enclosed shower, water closet, and twin vanity. The full basement offers ample storage space and expansion possibilities with all that is needed in place. Nothing has been spared to provide you with a luxurious lifestyle in an ideal location. Come enjoy all the best life has to offer.

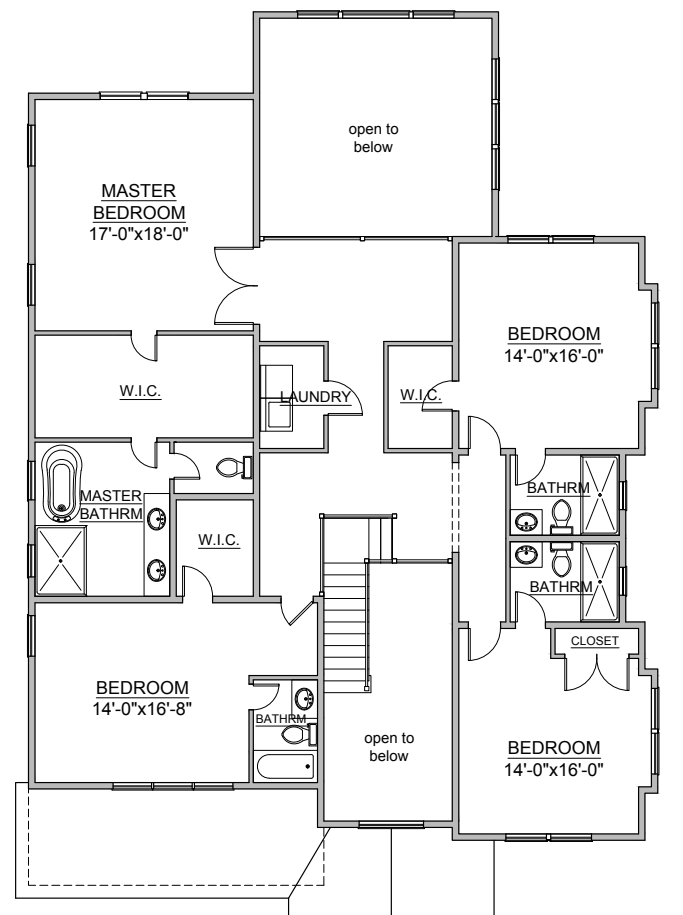




FIRST FLOOR



SECOND FLOOR



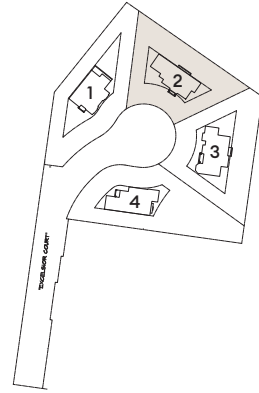






20 EXCELSIOR COURT

# STATELY TRADITIONAL COLONIAL

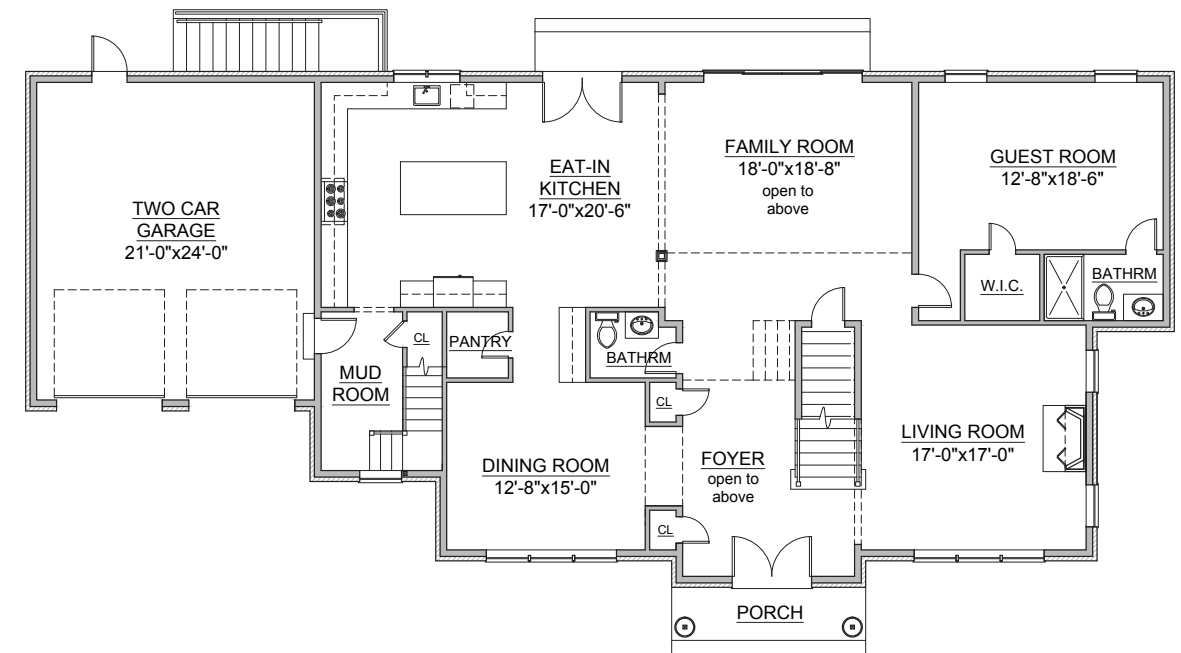


5 BEDROOMS | 5.5 BATHS | APPROX. 6,000 SF

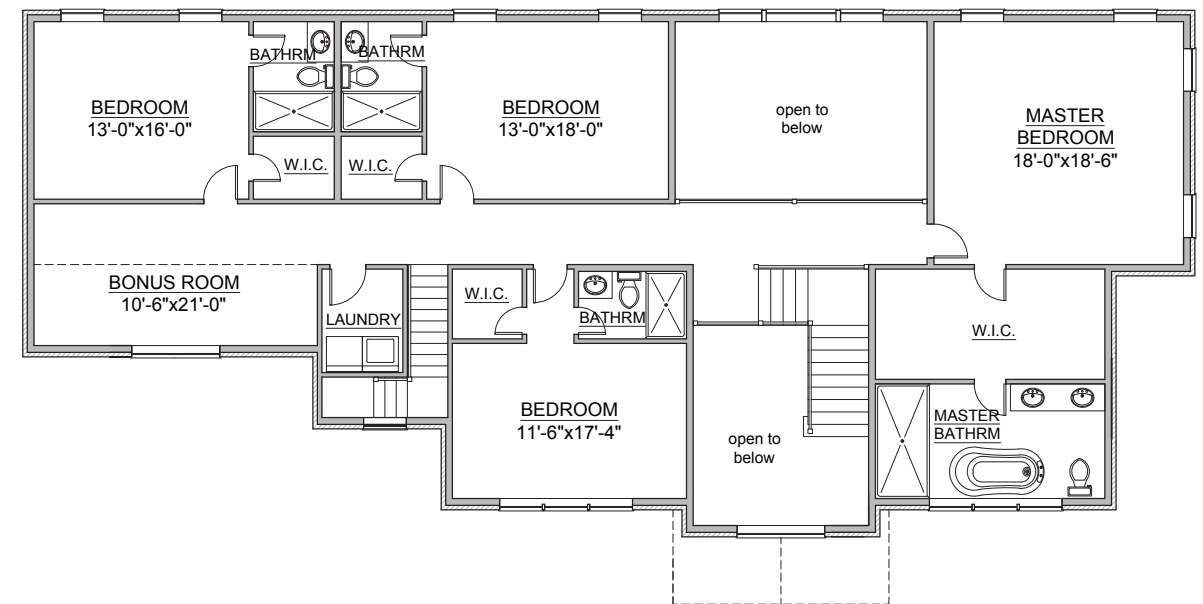
Worldly cares will melt away when you enter your magnificent new traditional brick Colonial sitting on a gorgeous half-acre property with beautiful landscaping and a backdrop of lush trees. With oversized windows and doors, coined corners, and a soaring two-story entrance with massive pillars, it welcomes you into a sun-splashed approximately 6,000 square-foot interior with fabulous flow for entertaining. Guests will be enthralled as they enter your two-story sun-splashed center-hall foyer with its fielded-panel wainscoting and massive crown moldings flowing into the sunny living room, with gas fireplace, and the elegant formal dining room. All three areas open to an expansive open rear floor plan encompassing a two-story den area, with a soaring wall of windows and sliders to the rear stone patio, and to the expansive gourmet eat-in kitchen. You will love preparing meals in this bright and well-equipped kitchen featuring ample custom cabinetry with granite countertop, mosaic backsplash, large center island, farm sink, high-end stainless-steel appliances, and butler's and walk-in pantries. The spacious breakfast area opens through French doors to the rear stone patio, and the custom-fitted mudroom accesses the backstairs and attached two-car garage. A spacious guest room with walk-in closet and full bath completes this level.

Three additional bedrooms, each with private full bath and walk-in closet, share the second floor with a laundry room, bonus room with massive arched window, a balcony overlooking the foyer and den, and a five-star-quality master suite boasting a sunny spacious bedroom, immense walk-in closet/dressing room, and lavish bath with large frameless-glass-enclosed shower, free-standing tub, and twin vanity. The full basement provides ample storage space, plumbing and electric for future expansion, and access to the rear property. With timeless design and state-of-the-art amenities, this stately and stylish residence only needs you to make it the home of your dreams.

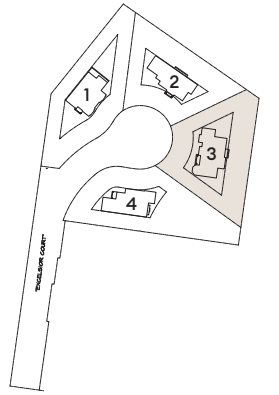
FIRST FLOOR



SECOND FLOOR







## EXQUISITE HAMPTON-STYLE COLONIAL

5 BEDROOMS | 4.5 BATHS | APPROX 6,000 SF

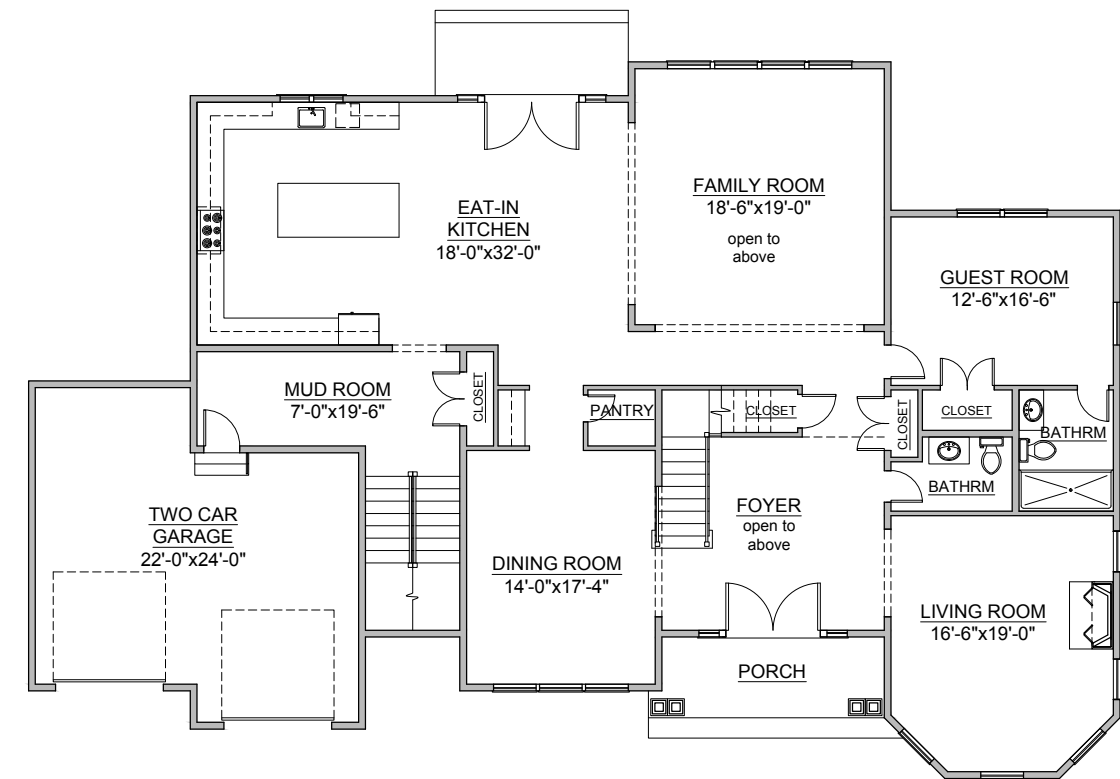
Sitting on a half-acre triangular property backing a thick woodland and scenic pond, this striking clapboard center-hall Colonial with modern Victorian elements will provide you ample space for the future addition of an outdoor entertainment center with a pool if desired. It's approximately 6,000 square-foot interior is equally appealing with its sun-drenched spacious foyer with porcelain floors and elegant moldings, graceful staircase, powder room, and wide entry to a sunny living room with fireplace and huge front bay window on one side and an elegant formal dining room on the right. Fielded-panel wainscoting graces all three spaces. A hallway to the rear of the foyer, accessing a guest suite with private bath, flows into a breathtaking two-story great room with soaring wall of windows flooding the room with verdant vistas of lush foliage. The immense adjoining eat-in kitchen will fulfill your dreams with its extensive granite-topped cabinetry with mosaic backsplash and farm sink, huge center island with seating, high-end stainless-steel appliances, walk-in pantry, and butler's pantry. Its roomy breakfast area opens through French doors to the rear stone patio, and an adjoining mudroom with custom built-ins and closet provides access to the attached two-car garage and a rear staircase.

On the second floor, a bridge overlooking the foyer and family room with wood and iron balustrade, leads to the master wing. This palatial retreat will pamper you royally offering a spacious bedroom with vaulted ceiling, two large walk-in closets, and a huge luxurious master bath will pamper you with a glass-enclosed shower, free-standing tub set in a huge bay window, two console vanities, and a water closet. Across the bridge landing, a long hallway leads to an additional bedroom with bath, two bedrooms sharing a Jack-and-Jill bath, a laundry room, back stairs, and a huge bonus room. The full basement offers ample storage and is plumbed and wired for future expansion. With exquisite finishes and craftsmanship throughout, this home is design for your complete enjoyment.

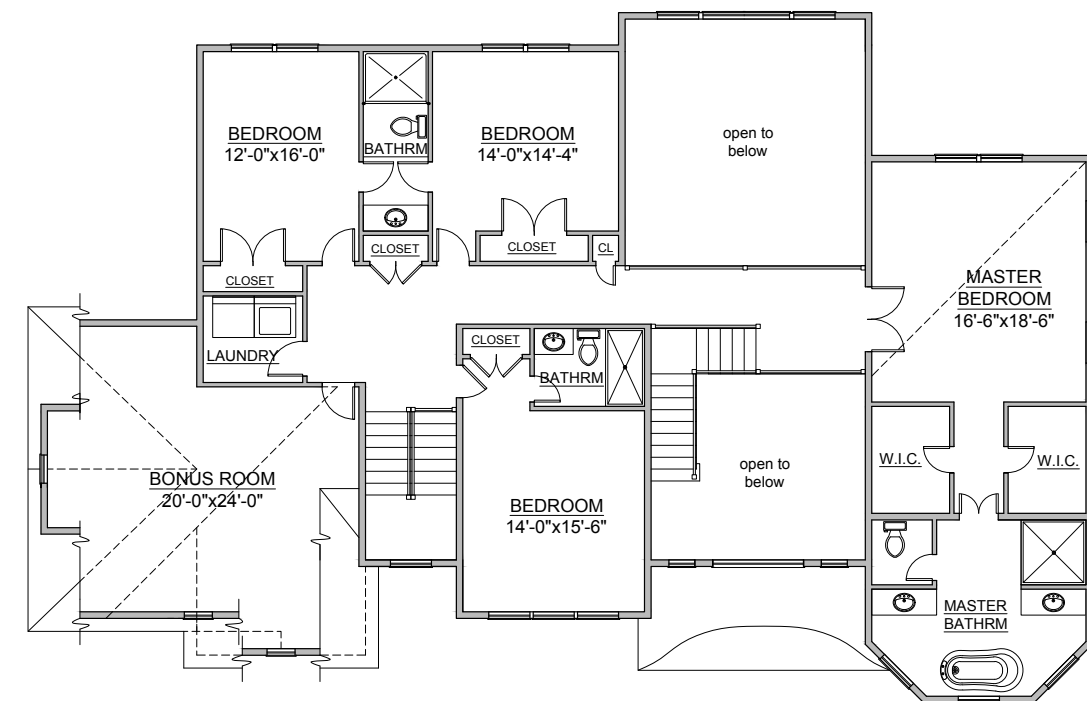




FIRST FLOOR



SECOND FLOOR



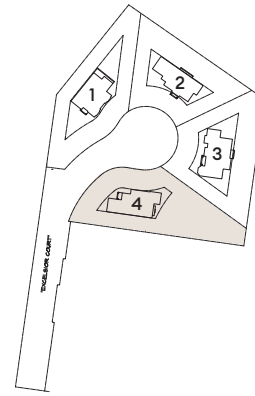






40 EXCELSIOR COURT

# EXQUISITE BRICK COLONIAL

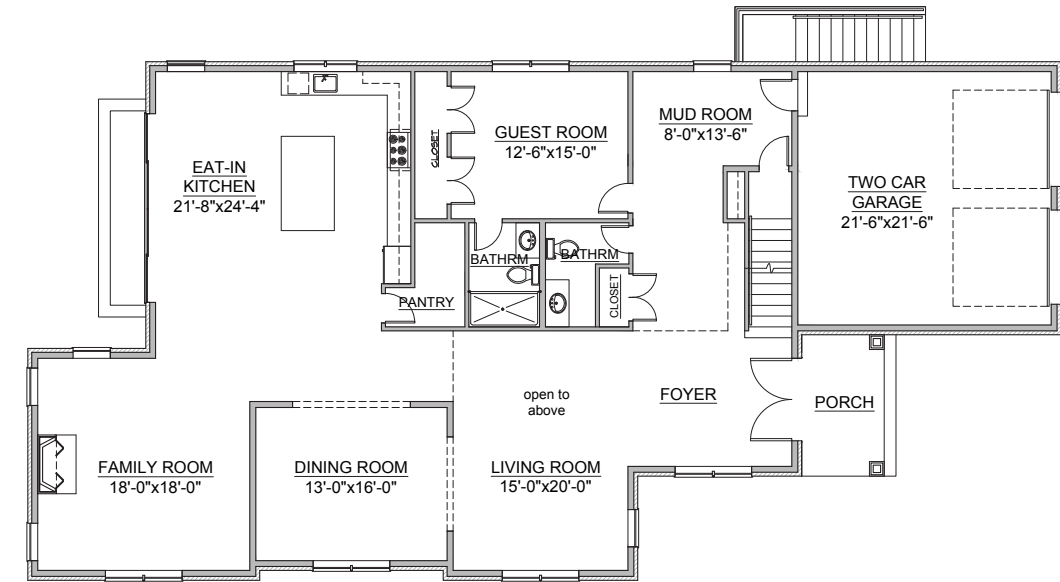


5 BEDROOMS | 5.5 BATHS | APPROX. 6,000 SF

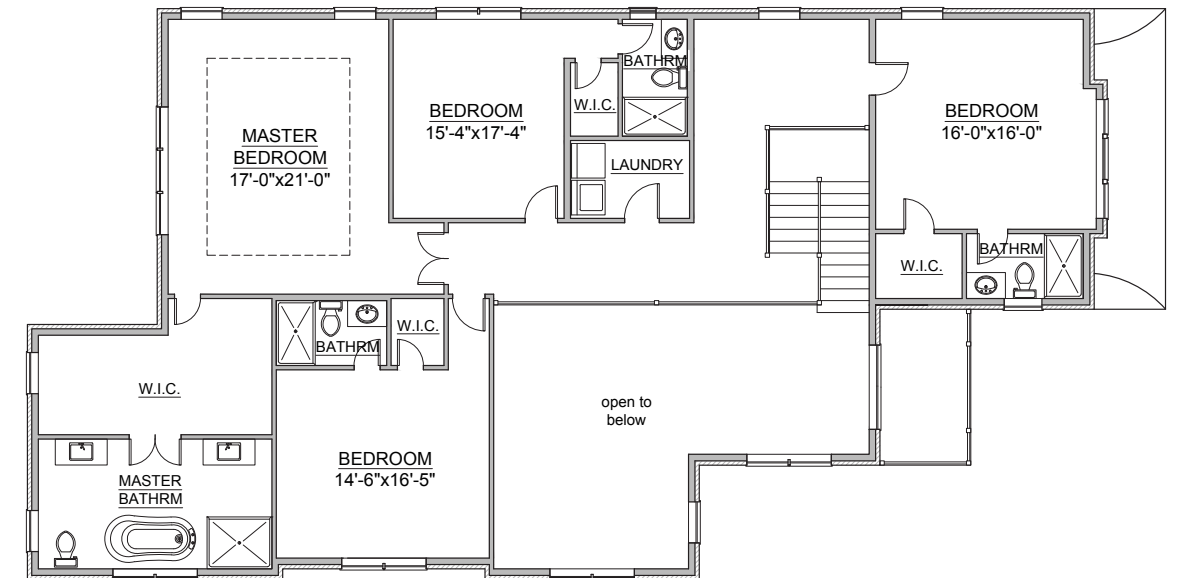
Backing up to a secluded pond and the pristine woodland of Lowell H. Kane Park, the half-acre property of this stunning brick Colonial offers you a unique opportunity to transform the backyard into a magical retreat. The home's approximately 6,000 square-foot interior, with five bedrooms and five-and-a-half baths, will equally thrill you with its soaring and spacious two-story foyer and living room. A huge eat-in kitchen with ample custom cabinetry, farm sink, granite countertop, expansive center island with seating, mosaic backsplash, and walk-in pantry, is flooded with sunlight through windows and a wall of sliders in its spacious breakfast area opening to the rear stone patio. Porcelain floors flow seamlessly into the rear foyer, elegant formal dining room, and cheery, sun-swept family room with gas fireplace. A side foyer provides access to the powder room, guest suite with private bath, basement stairs, and mudroom leading to the attached two-car garage.

A staircase ascending to the second floor features a stunning wood-and-iron balustrade overlooking the foyer and living room from a spacious landing with sitting area and access to the laundry room and three delightful bedrooms with walk-in closets and private baths. Luxuriate in your private and sublime master suite featuring a spacious bedroom with a vaulted ceiling, a gigantic walk-in closet with window, and a spacious master bath with free-standing tub, frameless-glass-enclosed shower, and two console vanities. The full unfinished basement, with access to the side yard, allows ample storage and expansion possibilities limited only by your imagination. This striking and spacious haven stands ready to capture your heart.

FIRST FLOOR



SECOND FLOOR







Maria Babaev

Licensed Associate Real Estate Broker

O 516.629.2239 | M 516.287.7716

mbabaev@elliman.com

mariababaev.com

EXCELSIOR-ESTATES.COM

